

# LARIMIDEPRO<sup>®</sup>

Spain

Rituals at the forefront of professional skin care





## INDEX

<b>CLARIFY</b> Micellar Water	7
<b>CLARIFY SILK</b> Cleansing Milk	8
<b>CELLRENEW</b> Exfoliating Toner	9
<b>BIOPEEL SHOCK</b> 28 days intensive treatment	10
<b>BIOPEEL PERFECT</b> Anti-blemish Biochemical Peel	11
<b>SHOCK PURIFY</b> Shock treatment against the appearance of skin imperfections	12
<b>BIOPEEL MOIST</b> Deep Hydration Biochemical Peel	13
<b>SHOCK ACTIVE</b> Treatment ampoule to activate epidermal cells and increase energy levels	14
<b>BIOPEEL AGE</b> Antiage Biochemical Peel	15
<b>SHOCK WRINKLE</b> Treatment ampoule to combat aging naturally and stimulate cell regeneration	16
<b>BIOPEEL UNIFY</b> Photoaging Biochemical Peel	17
<b>SHOCK ILLUMINATE</b> Shock treatment to unify the skin tone and illuminate the skin	18
<b>CALMANT MASK</b> Clay Mask	19
<b>24H</b> Massage Cream	20
<b>ALGINASINE CALMANT</b> Soothing Peel-off Mask	21
<b>ALGINASINE B-LIKE</b> Anti-wrinkle peel-off mask	22
<b>ALGINASINE VIVIFY</b> Detox peel-off mask	23
<b>ALGINASINE GOODWHITE</b> Anti-photoaging Peel-off Mask	24
<b>CANNANOUR</b> Anti-ageing Night Treatment	25
<b>VITAMINIC</b> Light Day Cream	26



# LARIMIDE<sup>®</sup>PRO

Spain

**LARIMIDE PRO** are beauty rituals created for all those people who want to take their beauty to another level and live a unique experience at the hands of beauty professionals on the way to being more beautiful.

**LARIMIDE PRO** products cover all the needs of the skin, combining cabin treatment with use at home to be able to exert a total action every day of the month and obtain miraculous results in record time.

Apart from the complementary functions of cleansing, massage and finishing, the **LARIMIDE PRO** rituals revolve around 3 concepts: chemical exfoliation with peels with organic ingredients of biologic origin (Biopeels), direct activation through the use of specific ampoules for each treatment (Shock) and detoxification and relaxation provided by alginate masks (Alginasine).

## **LARIMIDE PRO, rituals at the forefront of professional cosmetics.**

**LARIMIDE PRO** products are formulated by pharmacists with scientifically advanced molecules, tested and biocompatible with the dermal needs of all skin types. With selected ingredients that turn professional cosmetics into an avant-garde art that looks to the future, with highly effective products and seeking immediate results. Rituals designed by professionals according to the needs of the skin and the specific concerns of the clients.

**LARIMIDE PRO** has a position of 100% transparency with the ingredients it uses, as it is firmly committed to the environment and seeks to develop products that are in line with ethical and sustainable practices, where the goal is to leave a minimal carbon footprint. That is why the percentages of the active ingredients that compose it are detailed on the labelling of each product.

All **LARIMIDE PRO** products are manufactured in Spain, vegan, dermatologically tested, not tested on animals, and reusable or recyclable eco-friendly packaging is used as part of its commitment to the environment.



1  
Cleansing



**CLARIFY**  
Micellar Water

or



**CLARIFY SILK**  
Cleansing Milk



2  
Tonify



**CELLRENEW**  
Exfoliating Toner



3  
Renewal  
Activation



**BIOPEEL PERFECT**  
Anti-blemish  
Biochemical Peel



**SHOCK PURIFY**  
Shock treatment against  
the appearance of skin  
imperfections



**BIOPEEL MOIST**  
Deep Hydration  
Biochemical Peel



**SHOCK ACTIVE**  
Treatment ampoule to  
activate epidermal cells and  
increase energy levels



**BIOPEEL AGE**  
Antiage Biochemical Peel



**SHOCK WRINKLE**  
Treatment ampoule to  
combat aging naturally  
and stimulate cell  
regeneration



**BIOPEEL UNIFY**  
Photoaging  
Biochemical Peel



**SHOCK ILLUMINATE**  
Shock treatment to  
unify the skin tone and  
illuminate the skin



4  
Massage



**24 HOUR**  
Massage Cream



5  
Calming



**CALMANT MASK**  
Clay mask



6  
Relax



**ALGINASINE CALMANT**  
Soothing Peel-off Mask



**ALGINASINE B-LIKE**  
Anti-wrinkle peel-off mask



**ALGINASINE VIVIFY**  
Detox peel-off mask



**ALGINASINE GOODWHITE**  
Anti-photoaging Peel-off Mask



7  
Finishing



**CANNANOUR**  
Anti-ageing Night Treatment

or



**VITAMINIC**  
Light Day Cream

# CLARIFY Micellar Water



Eliminates impurities and excess sebum by gently cleansing and removing make-up from your face, eyes and lips.

A true off-road micellar water formulated with natural ingredients. Regardless of skin type, it gently cleanses and revitalizes the skin, leaving it luminous. Revives the luminosity of dull complexions for an immediate new-skin effect.

## PERFORMANCE

For all skin types that deeply purifies, cleanses and detoxifies the skin thanks to its high concentration of active ingredients. Closes the pores, keeping the skin oil-free for longer.

Used daily, provide intense and instant hydration, reduces sebum production, pore size and improves skin texture, with a pleasant sensation of freshness.

## ACTIVE INGREDIENTS



### Niacinamide

Regulates sebum production and pore size, has anti-pollution action and improves skin texture. In addition, it significantly increases hydration levels, the integrity of the stratum corneum barrier and elasticity.



### Natural Moisturizing Factors

Are the substances that protect the skin against dehydration. They are responsible for maintaining an adequate level of water in the upper layers of the skin. It also plays a key role in maintaining the physical properties of the upper layers of the skin (the stratum corneum).



### Carbohydrates

They are metabolic compounds that constitute the main source of energy for the human body, and fulfill other structural functions, such as water retention vehicles, and as protection mechanisms against external factors.



### Hyaluronic Acid

Helps to strengthen the extracellular structure of our dermis, improving the elasticity and smoothness of our skin. Deeply hydrates the skin and improves its appearance.

## HOW TO USE



Apply on a cotton pad, use it on the skin with a gentle massage.

Avoid contact with the inner eye.

96 %

skin-friendly ingredients of natural origin:

Niacinamide, Hyaluronic Acid, Urea, Fructose and Maltose.

1%

additional ingredients to ensure the stability and safety of the formula:

Sodium Benzoate, Potassium Sorbate.

Ophthalmologically Tested.

# CLARIFY SILK Cleansing Milk

---



With Soy Oil and Avocado Oil

Gently removes make-up and impurities while respecting the physiological balance of the skin. Purifies, softens and protects the skin thanks to its soft and light cleansing oils.

---

## PERFORMANCE

Cleanses in depth without irritating, respecting the skin's dermal barrier thanks to its high concentration of vegetable oils. Controls sebaceous secretion and reduces open pores. Hydrates, revitalizes, illuminates and provides a radiant finish to the skin.

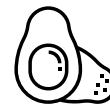
---

## ACTIVE INGREDIENTS



### Soybean oil

with a high content of vitamins, minerals and, above all, isoflavones with antioxidant properties. Soy helps keep skin's hydration levels constantly high. And it is that this plant acts as an antioxidant and prevents the action of free radicals by acting on the lipid profile of the skin and favouring the creation of collagen.



### Avocado oil

Constitutes a great contribution of hydration and nutrition thanks to the fatty acids it contains, taking care of repairing damaged areas of the skin, especially dry or cracked skin. It is also special for sensitive skin, as it treats the skin gently and gently.

---

## HOW TO USE



Apply the cleansing milk using the fingertips or a cotton pad on the face and neck. Combine it with Clarify to achieve perfect make-up removal.

99 %

skin-friendly ingredients of natural origin:  
Soybean Oil, Olive Oil, Almond Oil, Avocado Oil, Ceramides.

1 %

additional ingredients to ensure the stability and safety of the formula:

Sodium Benzoate, Potassium Sorbate.

Dermatologically tested.



# CELLRENEW Exfoliating Toner



Eliminate dead cells and reduce blackheads in a daily treatment with 2% salicylic acid.

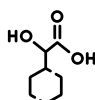
Fast absorbing toner removes built-up dead skin cells and fights blackheads.

A unique leave-in formula that is gentle enough for daily use on all skin types. Exfoliates dead skin cells while cleansing pores for a more even, radiant tone, plus visibly reduces fine lines and wrinkles for noticeably smoother, younger-looking skin. This scrub has an optimal pH range for the skin.

## PERFORMANCE

When dead skin cells accumulate on its surface, the skin becomes brittle, dry and lifeless. Beta Hydroxy Acid (BHA, also known as Salicylic Acid) mimics younger skin's natural exfoliation process by helping it slough off extra layers while unclogging and cleansing pores.

## ACTIVE INGREDIENTS



### Salicylic Acid

Is part of the family of hydroxy acids and is a desmolytic ingredient. That means it targets certain protein bonds in skin known as desmosomes, that keep dead cells clinging to skin instead of sloughing off. Skin's natural shedding process can become faulty due to age, sun damage, and problems like acne and excess oil. Exfoliating helps restore this natural ability.

## HOW TO USE



Gently apply using a cotton pad over entire face and neck, after cleansing.

Use with caution. Apply carefully and note skin's response. In case of itching, remove immediately with water. When used for daytime, always finish the treatment with a sunscreen.



99 %

skin-friendly ingredients of natural origin:  
Salicylic Acid and Vitamin F.

1%

additional ingredients to ensure the stability and safety of the formula:

Sodium Benzoate, Potassium Sorbate.

Dermatologically tested.

# BIOPEEL SHOCK 28 days intensive treatment

---

The secret of young, smooth, luminous and vital skin is a monthly treatment that acts daily on the different needs of our skin with the incorporation of scientifically advanced molecules, tested and biocompatible with the dermal needs of daily life.

This treatment will prevent premature aging, blemishes, dehydration and dull skin, while maintaining vital functions optimally and reinforcing the skin's regeneration mechanisms.

It is an innovative composition of 28 ampoules of 8 different types that will keep your skin fully cared for from the comfort of your home. With selected ingredients that adjust to biochemistry in an avant-garde art that looks to the future, with highly effective ampoules and seeking immediate results.

Created to use one ampoule a day, treating each week one of the basic needs of the skin and configuring a total treatment throughout the month that covers all the needs of the dermis.

Designed by professionals according to the needs of the skin and the specific concerns of the clients.



---

## WEEK 1 Anti-imperfections

DAY 1	<b>BIOPEEL PERFECT</b>
DAY 2	<b>SHOCK PURIFY</b>
DAY 3	<b>BIOPEEL PERFECT</b>
DAY 4	<b>SHOCK PURIFY</b>
DAY 5	<b>BIOPEEL PERFECT</b>
DAY 6	<b>SHOCK PURIFY</b>
DAY 7	<b>SHOCK PURIFY</b>

## WEEK 2 Dehydration

DAY 8	<b>BIOPEEL MOIST</b>
DAY 9	<b>SHOCK ACTIVE</b>
DAY 10	<b>BIOPEEL MOIST</b>
DAY 11	<b>SHOCK ACTIVE</b>
DAY 12	<b>BIOPEEL MOIST</b>
DAY 13	<b>SHOCK ACTIVE</b>
DAY 14	<b>SHOCK ACTIVE</b>

## WEEK 3 Anti-wrinkle

DAY 15	<b>BIOPEEL AGE</b>
DAY 16	<b>SHOCK WRINKLE</b>
DAY 17	<b>BIOPEEL AGE</b>
DAY 18	<b>SHOCK WRINKLE</b>
DAY 19	<b>BIOPEEL AGE</b>
DAY 20	<b>SHOCK WRINKLE</b>
DAY 21	<b>SHOCK WRINKLE</b>

## WEEK 4 Unified + illuminated Tone

DAY 22	<b>BIOPEEL UNIFY</b>
DAY 23	<b>SHOCK ILLUMINATE</b>
DAY 24	<b>BIOPEEL UNIFY</b>
DAY 25	<b>SHOCK ILLUMINATE</b>
DAY 26	<b>BIOPEEL UNIFY</b>
DAY 27	<b>SHOCK ILLUMINATE</b>
DAY 28	<b>SHOCK ILLUMINATE</b>

# BIOPEEL PERFECT Anti-blemish Biochemical Peel



Salicylic Acid 1%, Gluconolactone 5%  
Professional use treatment for imperfections.

Reduces the appearance of comedones, pimples, blackheads and improves the appearance of the skin, especially in oily skin.

This Biopeel combines ingredients with a powerful keratolytic and sebum-regulating effect, for oily, pro-acneic and seborrheic skin.

## PERFORMANCE

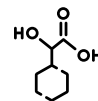
Designed to obtain a smoother, more uniform and homogeneous skin. Thanks to its high concentration of gluconolactone, it has exfoliating, antioxidant, unifying and regenerating properties.

## ACTIVE INGREDIENTS



### Gluconolactone

Reinforces the skin's barrier, improves its luminosity and visibly reduces the signs of aging without causing discomfort or irritation. It has moisturizing and antioxidant properties, and is ideal for combating imperfections.



### Salicylic Acid

Penetrates easily, quickly and deeply through the lipid barriers of the epidermis. It is easily absorbed so it is highly effective, excellent in the treatment of skin disorders involving excess sebum production.

## HOW TO USE



Apply a few drops to the area to be treated, as many times as the professional decides.

Leave under exposure for 10 min and remove. If any type of reaction is observed, remove immediately.



Do not apply to mucous membranes or around the eyes.

## 94,5 %

skin-friendly ingredients of natural origin:  
Alcohol, Glycerin, Vitamin F.

## 1%

additional ingredients to ensure the stability and safety of the formula:

Phenoxyethanol, Ethylhexylglycerin.

Dermatologically tested.

# SHOCK PURIFY

Shock treatment against the appearance of skin imperfections

---



With Green Tea Extract and Bioflavonoids

Shock Purify contains natural ingredients that help rebalance the lipid layer, with powerful antiseborrheic and antibacterial properties, which have a control effect on the sebaceous glands, preventing the formation of imperfections and reducing bacterial proliferation.

Natural extracts, including green tea, reduce inflammation while softening the skin, achieving less oily skin, without acne and with fewer blackheads.

Recommended for oily skin.

---

## PERFORMANCE

The natural ingredients it contains generate a dermopurifying action that is especially indicated to correct small imperfections and impurities in acne-prone skin. Helps to mattify the skin, prevents shine and dums and reduces the appearance of pores.

---

## ACTIVE INGREDIENTS



### Green Tea Extract

Acts as a moisturizer and antibacterial, reducing excess hormonal activity. The astringent function of the tannins that form it is capable of regulating the excess oil of skin that tends to have pimples, and manages to reduce pores.



### Bioflavonoids

Act as powerful antioxidants and help fight the signs of aging, thus preventing the formation of wrinkles and skin imperfections. They regulate the tone of the skin, acquiring a uniform and slightly illuminated complexion.

---

## HOW TO USE



Break the ampoule and apply with a gentle circular massage.

Avoid eye contour.

External use.

Not injectable.

99 %

skin-friendly ingredients of natural origin:

Green Tea Extract, Bioflavonoids, Chamomile Extract, Liquorice Extract, Rosemary Extract.

1%

additional ingredients to ensure the stability and safety of the formula:

Sodium Benzoate, Potassium Sorbate.

Dermatologically tested.

# BIOPEEL MOIST Deep Hydration Biochemical Peel

Lactic acid 10% Malic acid 10%



With a high concentration of two acids, they form a perfect combination for an immediate treatment against rough and withered tissue that arises from the lack of hydration of the skin. It eliminates dead cells due to osmotic imbalance and replaces them with young and plump cells.

This treatment is recommended for all skin types and in some cases, it is usually combined with other types of Biopeels to obtain better results.

## PERFORMANCE

It achieves the elimination of dead cells in a gentle and controlled way, which helps to reactivate blood circulation, to cleanse the pores in a deep way and to stimulate the hydration of the cells of the dermal tissue.

It improves the water capacity of the epithelial cells, achieving skin with a greater quantity of water molecules that reinforce cell hydration and improve its function.

Renews the layers of the epidermis by exfoliating the superficial cells and promoting cell renewal that gives rise to a new, younger and more functional epidermis.

## ACTIVE INGREDIENTS



### Lactic Acid

Helps the oldest and most dysfunctional cells on the skin's surface to detach by dissolving the bonds that hold them together. Lactic acid accelerates cell renewal and stimulates cell regeneration. Lactic acid helps improve the skin's natural moisturizing factor, or the way the skin stays hydrated.



### Malic Acid

Naturally sourced from apples, malic acid is probably the least well known of the commonly used skincare ingredients. As an AHA, it stimulates the rate of skin cell renewal and increases collagen production.

## HOW TO USE



Apply a few drops to the area to be treated, as many times as the professional decides.

Leave under exposure for 10 min and remove. If any type of reaction is observed, remove immediately.



Do not apply to mucous membranes or around the eyes.

94,5 %

skin-friendly ingredients of natural origin:  
Alcohol, Glycerin, F Vitamin.

1%

additional ingredients to ensure the stability and safety of the formula:

Phenoxyethanol, Ethylhexylglycerin.

Dermatologically tested.

# SHOCK ACTIVE

Treatment ampoule to activate epidermal cells and increase energy levels

## With Hyaluronic Acid and Stem Cells



Human skin is the largest repository of adult stem cells, but, over time, its activity is reduced, causing skin deterioration.

With the passing of time, the energy level of stem cells is affected by the circadian rhythm; good internal oxygenation of the mitochondria is vital to keep stem cells in perfect condition, preserving 100% of their ability to regenerate the skin.

Shock Active stimulates the mitochondria to oxygenate the skin; thereby activating the stem cells from within.

## PERFORMANCE

Stem cells contain molecules that favour the memory and intelligence of skin cells. They help to firm and improve the stability of the cell membrane, which protects it from free radicals, and helps eliminate toxins, improving elasticity. In addition, its great affinity for the skin provides rapid absorption.

Epigenetic technology, derived from the action of stem cells on genes, helps activate proteins that regulate DNA, preventing apoptosis or self-destruction of cells and delaying cell aging.

For its part, hyaluronic acid firms the skin and reduces wrinkles by moisturizing the epidermis and enhancing the synthesis of collagen and elastin.

## ACTIVE INGREDIENTS



### Stem Cells

Delay the aging process and improve quality of life by repairing and regenerating cellular tissue. They promote growth and delay signs of aging by increasing energy levels.



### Hyaluronic Acid

Manages to balance the gradual loss of water through two different mechanisms. On the one hand, it incorporates HA molecules into the deeper layers of the skin, where each molecule is able to accumulate 10 times its weight in water, and also in the outer layer of the epidermis, creating an invisible film that prevents dehydration..

## HOW TO USE



Break the ampoule and apply with a gentle circular massage.

Avoid eye contour.

External use.

Not injectable.

# 99 %

skin-friendly ingredients of natural origin:

Glycoproteins, Hyaluronic Acid, Stem Cells, Amino Acids.

# 1%

additional ingredients to ensure the stability and safety of the formula:

Sodium Benzoate, Potassium Sorbate.

Dermatologically tested.

# BIOPEEL AGE Antiage Biochemical Peel



Glycolic Acid 5%, Azelaic Acid 5%, Niacinamide 5%

Formula that fuses acids with a powerful anti-inflammatory active ingredient: Niacinamide. With exfoliating, renewing, rejuvenating and regenerating action, it has special characteristics thanks to the synergy obtained from the union of the combined active ingredients that improve the results and increase the power of the formula.

Recommended to globally treat all signs of aging and intensely rejuvenate the face.

## PERFORMANCE

It removes the most superficial layers of the skin, renewing them and improving the skin's micro-relief while stimulating cell activity, causing a significant improvement in the elasticity, firmness and turgor of the skin.

Renews the layers of the epidermis by exfoliating the superficial cells and promoting cell renewal that gives rise to a new, younger and more functional epidermis.

## ACTIVE INGREDIENTS



**Glycolic Acid**

It is a very versatile active ingredient that, thanks to its properties, is used to treat various skin problems.

Exfoliating par excellence, it frees the cells in the process of desquamation of the skin by breaking the intercellular junctions, giving rise to new cells with greater vitality.



**Azelaic Acid**

Acts on the skin as a gentle, leave-in exfoliant that helps unclog pores and refine the skin's surface. Significantly reduces factors in the skin that cause sensitivity and blemishes and provides antioxidant benefits.



**Niacinamide**

One of the most powerful anti-inflammatories in the world of beauty, making it a great ally for people with acne, rosacea, hypersensitivity or irritable skin. It instantly relaxes the skin and is a great amplifier of other active ingredients. It is a powerful antioxidant that protects the skin from free radicals such as pollution or solar radiation. It is naturally stable and helps the skin protect itself and control its own sebum production.

## HOW TO USE



Apply a few drops to the area to be treated, as many times as the professional decides.

Leave under exposure for 10 min and remove. If any type of reaction is observed, remove immediately.



Do not apply to mucous membranes or around the eyes.

89.5 %

skin-friendly ingredients of natural origin:  
Alcohol, Glycerin, F Vitamin.

1%

additional ingredients to ensure the stability and safety of the formula:

Phenoxyethanol, Ethylhexylglycerin.

Dermatologically tested.

# SHOCK WRINKLE

regeneration

Treatment ampoule to combat aging naturally and stimulate cell

With Phytoplacenta

An innovative synergistic combination that manages to reinforce the dermal extracellular structure and rejuvenates the epidermic cells.

Increases the levels of cellular nutrients, achieving smoother, firmer and more flexible skin. Each Shock contains a powerful cocktail of vitamins, proteins and botanical stimulants that activate all the regenerative power of nature.

Perform on skin cells providing all the necessary ingredients to promote cell regeneration and tissue revitalization.



## PERFORMANCE

It provides proteins, vitamins and amino acids with a bioidentical structure to those of the dermis and epidermis. It activates the cellular genetic expression that regulates the skin's hydration level and significantly improves skin relief, providing nutrition, softness and hydration. The skin increases protein synthesis levels, which significantly affects hydration in all layers of the dermis.

Phytoplacenta contains powerful plant-derived stimulators called phytostimulins that positively influence the skin's stem cell resistance against aging, promote skin regeneration and delay the appearance of wrinkles. Its immediate action facilitates cell regeneration, smooths skin relief and prevents the appearance of wrinkles while respecting the skin's ecosystem.

## ACTIVE INGREDIENTS



### Glycoproteins

Their main function is to repair dehydrated skin, improve collagen formation and increase the synergistic effect they have with other nutritional trace elements and antioxidants such as vitamins.



### Phytoplacenta

It has the ability to regenerate tissues very easily as it has a cellular structure identical to our skin. Helps the skin to actively defend itself against fatigue and stress, improving the supply of oxygen to the cells of the epidermis. It stimulates cell respiration, producing an increase in enzymatic activity and revitalizing suffocated, untoned and fragile skin.

## HOW TO USE



Break the ampoule and apply with a gentle circular massage.

Avoid eye contour.

External use.

Not injectable.

98 %

skin-friendly ingredients of natural origin:

Phytoplacenta, Glycoproteins, Vitamin F.

1%

additional ingredients to ensure the stability and safety of the formula:

Sodium Benzoate, Potassium Sorbate.

Dermatologically tested.



# BIOPEEL UNIFY Photoaging Biochemical Peel



Tranexamic Acid 3%, Daisy Extract, Glycolic Acid 5%

With a high concentration of two acids, they form a perfect Treatment of skin photoaging, improves dull skin, unifies skin tone and brightens the skin. Formulated to treat premature wrinkles, sagging, roughness, dryness and dull skin, the result of changes in pigmentation that appear in areas exposed to the sun.

## PERFORMANCE

This biopeel acts on three levels to illuminate the skin:

At the cellular level, removing dead cells that give the skin a dull tone.

In dermal pigments, it helps break down melanin, reducing the formation of spots.

It enhances the appearance of new cells that revitalize the skin, achieving a more uniform and luminous tone.

## ACTIVE INGREDIENTS



### Glycolic Acid

It is a very versatile active ingredient that, thanks to its properties, is used to treat various skin problems.

Exfoliating par excellence, it frees the cells in the process of desquamation of the skin by breaking the intercellular junctions, giving rise to new cells with greater vitality.



### Tranexamic Acid

Manages to depigment the skin, inhibiting the binding of plasminogen to keratinocytes, which are the superficial cells of the epidermis where melanin accumulates. This in turn decreases the formation of arachidonic acid, giving rise to fewer prostaglandins and leukotrienes, producing an inhibitory effect on the enzyme tyrosinase that regulates the formation of the pigment melanin.



### Daisy Extract

Natural ingredient with scientifically proven efficacy that acts at different levels, reduces the activity of tyrosinase, even before melanin synthesis is induced and produces a decrease in melanin in the skin.

## HOW TO USE



Apply a few drops to the area to be treated, as many times as the professional decides.

Leave under exposure for 10 min and remove. If any type of reaction is observed, remove immediately.



Do not apply to mucous membranes or around the eyes.

## 91.5 %

skin-friendly ingredients of natural origin:  
Alcohol, Glycerin, F Vitamin.

## 1%

additional ingredients to ensure the stability and safety of the formula:

Phenoxyethanol, Ethylhexylglycerin.

Dermatologically tested.

# SHOCK ILLUMINATE

Shock treatment to unify the skin tone and illuminate the skin

---

With Daisy Extract and Glycoproteins



Unify skin tone and illuminates the skin while boosting cellular energy levels.

Contains daisy extract for the prevention and treatment of dull skin with generalized and localized blemishes of melanin and vascular origin. Prevents, slows down and clarifies dull skin thanks to its high concentration of illuminating active ingredients to achieve skin with a uniform tone and vitality.

With glycoproteins and amino acids that increase cellular energy levels to restore your skin's full potential.

The result is skin with an unify tone, greater vitality and radiance.

---

## PERFORMANCE

With a high concentration of natural active ingredients that act in combination with depigmenting properties that help prevent and treat the size and number of spots. With revitalizing agents that promote cell proliferation, helping to have a younger skin tone, fighting against the signs of photoaging.

Inhibits the formation of melanin thanks to daisy extract, which prevents melanin from grouping into melanosomes that are transferred to the superficial layers of the skin, forming visible spots.

---

## ACTIVE INGREDIENTS



### Daisy Extract

Inhibits the production of melanin in the skin, interfering before the start of synthesis and inhibiting the expression of proteins necessary for melanin synthesis, which is triggered when the skin is exposed to UV radiation. During the melanin production process, daisy extract reduces the melanosomes produced by keratinocytes and slows the activity of the enzyme called tyrosinase, which acts by accelerating melanin production.



### Glycoproteins

Their main function is to repair dehydrated skin, improve collagen formation and increase the synergistic effect they have with other nutritional trace elements and antioxidants such as vitamins.

---

## HOW TO USE



Break the ampoule and apply with a gentle circular massage.

Avoid eye contour.

External use.

Not injectable.

99 %

skin-friendly ingredients of natural origin:

Daisy Extract, Glycoproteins, Hyaluronic Acid, Amino Acids.

1 %

additional ingredients to ensure the stability and safety of the formula:

Sodium Benzoate, Potassium Sorbate.

Dermatologically tested.

# CALMANT MASK Clay Mask



With Kaolin

Calms, detoxifies and purifies the dermis in depth due to its calming and soothing ingredients that improve cell regeneration. Improves elasticity and achieves smooth and even skin.

## PERFORMANCE

Pure Mediterranean Kaolin deeply cleanses, regulates excess sebum, reduces pimples and leaves skin smooth, soothed and clean.

The synergy of sweet almond oils and colloidal oatmeal soothe, revitalize and remineralize the skin, providing a bomb of vitamins and minerals that instantly eliminates the consequences of swollen and tired skin.

Thanks to its astringent power, it makes the skin more balanced and with less visible pores.

## ACTIVE INGREDIENTS



### Kaolin

Due to its special molecular structure, it has the ability to absorb the deepest impurities such as dirt and pollution residues. Its high cleaning and exfoliation power make it an excellent option to minimize the appearance of pores. Absorbs excess shine on skin without completely stripping natural oils. This gives the skin a balanced, radiant and nourished appearance.



### Oatmeal

Useful for relieving itching, as it has a calming action and is very good in case of irritation, eczema, itching, dermatitis, hives or psoriasis. It has a cleansing effect, absorbs the dirt that accumulates in the pores. Helps reduce and treat acne by controlling sebum production and the formation of shine on our skin.



### Sweet Almond Oil

Stands out for the flexibility it provides to the skin, moisturizing it, nourishing it and preventing it from aging prematurely.

## HOW TO USE



After the cleansing routine, dry your face well and apply the mask.

Extend until creating an even layer that covers the face, neck and décolletage.

Avoid the eye and lip area.

After 20 minutes, remove with warm water, performing circular massages to stimulate circulation.

20 min



98 %

skin-friendly ingredients of natural origin:  
Kaolin, Colloidal Oatmeal, Almond Oil.

1%

additional ingredients to ensure the stability and safety of the formula:

Sodium Benzoate, Potassium Sorbate.

Dermatologically tested.

# 24H Massage Cream

With Soybean Oil and Moringa Oil



Massage cream that revolutionizes the concept of professional massage products. Designed for all skin types, when applied, it creates a light and pleasant emulsion that is suitable for all types of massage. Formulated from an honest, sincere perspective that does not promise unattainable goals.

## PERFORMANCE

It reinforces the action of the massage and makes it more pleasant. To take advantage of its benefits, simply apply the cream to the area to be massaged. The cream quickly transforms into an emulsion with a light and pleasant texture for easy application. After heavy exercise, a professional massage is recommended to relax the muscles.

Combines 9 natural oils that nourish and soothe the skin. It contains relaxing properties that help to enjoy the massage. With a light texture for easy application and absorption, perfect for professional massages.

## ACTIVE INGREDIENTS



### Soybean Oil

With a high content of vitamins, minerals and, above all, isoflavones with antioxidant properties, it has been discovered that soybeans help to keep the skin's hydration levels constantly high. And it is that this plant acts as an antioxidant and prevents the action of free radicals by acting on the lipid profile of the skin and favouring the creation of collagen.



### Argan Oil

It has a high content of vitamins, which makes it a powerful antioxidant. Minimizes expression lines and nourishes the skin. All this promotes a youthful appearance and delays the appearance of wrinkles. Moisturizes the skin, reaffirms and, due to its regenerative capacity, provides greater elasticity to the skin.



### Olive Oil

Contains a wide variety of antioxidants, minerals and vitamins whose main function is to protect our skin from the different external agents that manage to damage our skin.



### Sunflower Oil

Is an excellent skin repair agent. It prevents skin dehydration and has soothing, nourishing and antibacterial properties.



### Sweet Almond Oil

Rich in plant-based proteins, almond oil has a very important nourishing action that makes it suitable for facial care. It stands out for the flexibility it provides to the skin, moisturizing it, nourishing it and preventing it from aging prematurely.



### Marula Oil

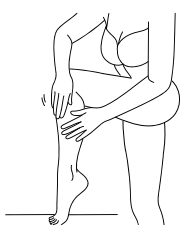
Originally from Namibia, it has been used for centuries to hydrate and repair the skin. Its most special feature is that it has 60 % more natural antioxidants than other oils. It contains 72 % Omega 9 fatty acids, as well as linoleic acid, sterols, flavonoids, catechins and stearic acid.



### Moringa Oil

Special to enhance the natural vitality of the skin, helps keep the skin moist and soft, fights the signs of ageing and loss of elasticity, reduces inflammation and helps care for the skin and reduce scars and blemishes.

## HOW TO USE



Apply a small amount to your hand, warm the product and spread evenly with both hands.

Massage gently with circular movements throughout the desired area.

Perfect for a relaxing massage thanks to its calming properties and the fruity and floral aromas it gives off.

98 %

skin-friendly ingredients of natural origin:

Soybean Oil, Olive Oil, Sweet Almond Oil, Coconut Oil, Argan Oil, Sunflower Oil, Moringa Oil and Marula Oil.

1%

additional ingredients to ensure the stability and safety of the formula:

Sodium Benzoate, Potassium Sorbate..

Dermatologically tested.

# ALGINASINE CALMANT Soothing Peel-off Mask



With Centella Asiatica Extract and Rosemary Extract

Mask with regenerating and soothing action based on alginates and diatomaceous earth. It helps the skin to regenerate, stimulating and strengthening collagen and elastin fibers, making it excellent for slowing down skin ageing.

## PERFORMANCE

Calms redness and irritated skin with its natural ingredients that provide the mask with vitamin, regenerating, moisturizing and soothing properties.

After its application, it provides a pleasant calming effect that fights irritations and helps to relax the epidermis. Get a smooth skin and recovered from external aggressions.

Firming, toning and soothing action.

## ACTIVE INGREDIENTS



### Centella Asiatica Extract

Has a stimulating effect on collagen biosynthesis as well as firming the skin and activating blood circulation.



### Rosemary Extract

Thanks to the phenolic diterpenes it contains, it is considered a powerful natural antioxidant. It has the ability to inhibit the oxidation of the cell membrane, ensuring that our skin is protected.

## HOW TO USE

1. Pour into a bowl 25 g of powder and add 50 ml of water.
2. Mix vigorously until achieving a homogenous a mass.
3. Apply on the area to be treated. If the layer of mask is not thick enough, the results will not be as much as expected.
4. Leave the mask under exposure for at least 15 minutes.
5. Peel the mask off and remove in one piece.

99 %

skin-friendly ingredients of natural origin:

Centella Asiatica Extract, Rosemary Extract, Chamomile Extract and Licorice Extract.

Dermatologically tested.

# ALGINASINE B-LIKE Anti-wrinkle peel-off mask



With Argireline and Peptides

Mask with regenerating and soothing action based on Mask with anti-wrinkle action based on alginates and diatomaceous earth. It acts on the skin repairing the damage caused by the passage of time and stimulates it, restoring the metabolic levels of a young skin. It combats flaccidity and loss of density, improves appearance, reduces wrinkles and improves skin tone. The result is younger and smoother skin.

## PERFORMANCE

Contains argireline and smart peptides that eliminate wrinkles, mimicking the effect of botox and reducing the appearance of new expression lines.

After its application, it provides a pleasant immediate effect that redensifies and redraws the facial oval. Achieving a smoother and youthless skin.

Rejuvenating, anti-flaccidity, and anti-wrinkle action.

## ACTIVE INGREDIENTS



### Argireline

A peptide designed to act on the muscle contraction mechanism that targets the same protein complex as botulinum toxin, modulating muscle contraction and achieving an anti-wrinkle effect like botox.



### Peptides

Repair sun damage at the cellular level, improving the luminosity and appearance of the skin, promoting collagen production and reducing wrinkles.

## HOW TO USE

1. Pour into a bowl 25 g of powder and add 50 ml of water.
2. Mix vigorously until achieving a homogenous a mass.
3. Apply on the area to be treated. If the layer of mask is not thick enough, the results will not be as much as expected.
4. Leave the mask under exposure for at least 15 minutes.
5. Peel the mask off and remove in one piece.

99 %

skin-friendly ingredients of natural origin:

Argireline, Peptides

Dermatologically tested.

# ALGINASINE VIVIFY Detox peel-off mask



With Glycoproteins and Amino Acids

Moisturizing and oxygenating action mask based on alginates and diatomaceous earth.

## PERFORMANCE

Contains glycoproteins and amino acids for a double oxygenating and refreshing effect: it promotes the natural renewal of the skin, helping to purify it, eliminating toxins that accumulate in the dermis.

After its application, it provides a pleasant immediate effect that tones and redefines the facial oval. Decongests and improves the appearance of wrinkles, bags and dark circles.

Firming, oxygenating and detox action.

## ACTIVE INGREDIENTS



### Glycoproteins

Their main function is to repair dehydrated skin, improve collagen formation and increase the synergistic effect they have with other nutritional trace elements and antioxidants such as vitamins.



### Amino Acids

They are responsible for internally supplying the nutrients and vital substances that nourish the skin. Amino acids are good for total internal regeneration, facilitating deep oxygenation of the dermis and helping to smooth wrinkles on the skin.

## HOW TO USE

1. Pour into a bowl 25 g of powder and add 50 ml of water.
2. Mix vigorously until achieving a homogenous a mass.
3. Apply on the area to be treated. If the layer of mask is not thick enough, the results will not be as much as expected.
4. Leave the mask under exposure for at least 15 minutes.
5. Peel the mask off and remove in one piece.

99 %

skin-friendly ingredients of natural origin:

Glycoproteins, Glutamic Acid, Valine and Threonine.

Dermatologically tested.

# ALGINASINE GOODWHITE Anti-photoaging Peel-off Mask



With Daisy Extract

Mask with anti-photoaging action, act against the visible signs of aging resulting from sun exposure, based on alginates and diatomaceous earth.

## PERFORMANCE

Contains daisy extract that helps to eliminate dark spots, stimulating their disappearance and unifying the skin tone.

After its application, it provides a pleasant immediate effect that illuminates and revitalizes the facial oval. Improve the appearance of blemishes and hyperpigmented areas.

Revitalizing, illuminating and anti-blemish action.

## ACTIVE INGREDIENTS



### Daisy Extract

Inhibits the production of melanin in the skin, interfering before the start of synthesis and inhibiting the expression of proteins necessary for melanin synthesis, which is triggered when the skin is exposed to UV radiation. During the melanin production process, daisy extract reduces the melanosomes produced by keratinocytes and slows the activity of the enzyme called tyrosinase, which acts by accelerating melanin production.

## HOW TO USE

1. Pour into a bowl 25 g of powder and add 50 ml of water.
2. Mix vigorously until achieving a homogenous a mass.
3. Apply on the area to be treated. If the layer of mask is not thick enough, the results will not be as much as expected.
4. Leave the mask under exposure for at least 15 minutes.
5. Peel the mask off and remove in one piece.

99 %

skin-friendly ingredients of natural origin:

Bellis Perennis (Daisy) Flower Extract.

Dermatologically tested.



# CANNANOUR Anti-ageing Night Treatment



Intensely treats the skin to nourish the face and reverse the appearance of fine lines, sagging and wrinkles.

With Hemp Oil, Rosehip Oil and Orange Extract.

Intense treatment to hydrate the face, fight expression lines, flaccidity and reverse wrinkles by penetrating the deepest layers of the skin. Improves the functioning of the epidermis, repairing cell damage and restructuring protein production. It incorporates a mixture of 18 natural active ingredients, resulting in an intense cream that retains moisture for hours, helping to nourish and soothe the skin.

## PERFORMANCE

A powerful anti-wrinkle treatment to ensure that the skin is more elastic and hydrated, recovering the water that your skin loses naturally with the effects of the sun, pollution and the passage of time. With a high concentration of antioxidants, vitamins and regenerators to strengthen, nourish and care for the skin.

Fights the signs of ageing, achieving smoother, firmer and more luminous skin. Accelerates cell regeneration, maintains its optimal level of function and prevents water loss.

## ACTIVE INGREDIENTS



### Hemp Oil

Contains antioxidant agents, which protect the skin from free radicals that cause cell degradation and the formation of wrinkles, expression lines and other signs of ageing. This oil prevents the appearance of signs of skin ageing and helps protect the skin from environmental damage and other external aggressions.



### Rose Hip Oil

It is an oil with great properties for cell regeneration. Its composition with numerous essential fatty acids (omega 6, omega 3 and linoleic acid), antioxidants and vitamins (vitamin A —retinol—, vitamin C, vitamin E) make it an essential ally in anti-ageing.



### Orange Extract

It has a high content of flavonoids, vitamin C and vitamin B3. Maintains the good condition of the skin and prevents the oxidative process. Improves the flexibility of the skin, reduces wrinkles and spots that occur on the skin as a result of skin ageing and sun exposure.

## HOW TO USE



With clean and dry skin, apply daily to face and neck.

Avoid eye contour.

# 98 %

skin-friendly ingredients of natural origin:

Hemp Oil, Rosehip Oil, Organic Lemon Water, Olive Oil, Orange Extract.

# 1%

additional ingredients to ensure the stability and safety of the formula:

Sodium Benzoate, Potassium Sorbate.

Dermatologically tested.

---

Activates and enhances the luminosity of your skin enjoying a fresh and invigorating dose of vitamin C to start the day.

With Vitamin C and Phloretin



Contains a complex made up of 3 different types of stable vitamin C and phloretin, with a silky, light texture that is quickly absorbed. Its exceptional antioxidant action is capable of effectively neutralizing the negative impact of free radicals and oxidative stress that cause the appearance of the signs of ageing.

Visibly improves the dull tone of the skin, smooths imperfections and gives vitality to the roughest and dull skin.

---

## PERFORMANCE

Feel the energizing vitamin C in high concentration that is capable of protecting your skin on multiple levels. It envelops the skin with its floral aromas, achieving a splendid, elastic and luminous complexion. Delays signs of fatigue and dull tone.

With multiple benefits for your body, it offers biological protection against pollution, and is deeply moisturizing. In addition, it naturally favours the production of collagen, improving firmness, and provides incredible luminosity.

---

## ACTIVE INGREDIENTS



### Vitamin C

Highly effective for skin care, it boosts collagen production to reduce the signs of ageing and correct dark spots. It is an antioxidant known for its ability to improve the appearance of aged skin. Increase radiance, improve texture and visibly reduce the appearance of lines, wrinkles and other signs of ageing.

### Phloretin



Works as a powerful antioxidant, reduces the effects of skin ageing and makes it softer, more flexible and rejuvenated. Due to its polarity, phloretin also improves the effective penetration of products into the deeper layers of the skin. Repairs damage and provides a smoothing and calming effect.

---

## HOW TO USE



With clean and dry skin, apply daily to face and neck.

Avoid eye contour.

92 %

skin-friendly ingredients of natural origin:

Vitamin C, Marula Oil, Phloretin, Hyaluronic Acid, Phytic Acid and Oat.

1%

additional ingredients to ensure the stability and safety of the formula:

Sodium Benzoate, Potassium Sorbate.

Dermatologically tested.



## ALL OUR PRODUCTS



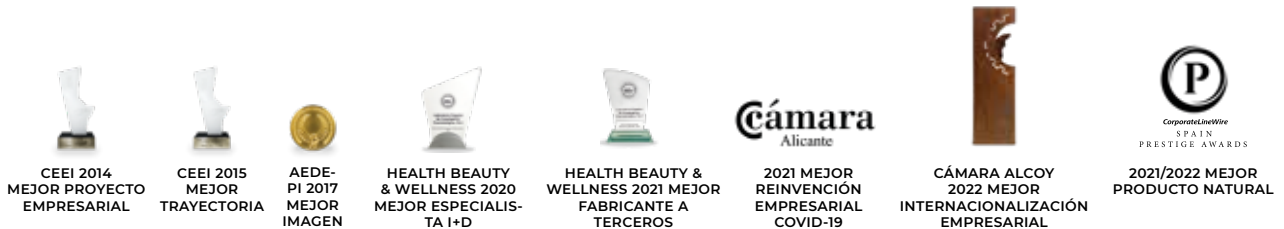
## CERTIFICATES



## EXCLUSIVE SAFETY PROTOCOL



## AWARDS



# LARIMIDE LARIMIDEPRO LARIMEDICAL

## Spain